

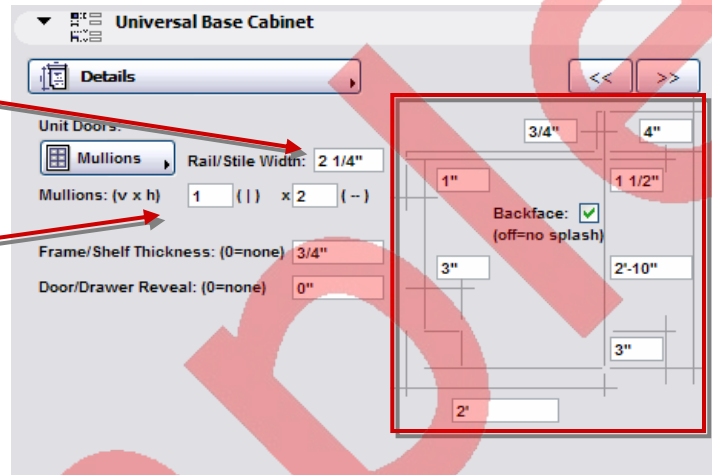
Details

“Door Style” fly-out button controls door panel style (“Flush”, “Inlay Panel”, or “Mullions”). If selected, you can control the “Inlay Panel” or “Mullion” perimeter frame width.

When “Mullions” is selected for the door style, you have the added parameters to control the number of horizontals and verticals.

“Frame/Shelf Thickness:” controls the appearance of the cabinet side and box panels and exposed shelf thicknesses.

“Door/Drawer Reveal:” controls the spacing between door and drawer panels.



The right side of the dialog allows control similar to the “Units” dialog, plus the following:

- Cabinet depth
- Toe space and counter overhang depth
- Backsplash height and thickness (0=none)
- Cabinet backface visibility.

Hardware

“Hardware:” controls hardware style (“Pulls”, “Knobs”, or “None”). If you select “Pulls” you have the ability to rotate the Pulls (horizontally or vertically)

“Size:” controls diameter x length of “Pulls” and diameter of “Knobs”.

You can control the hardware offset distance, referenced from the default location, in the graphic on the right side of the dialog.

